

RAILKING[®]
By M.T.H. Electric Trains

30-2145-1
30-2145-0
30-2144-1
30-2144-0
30-2182-1
30-2182-0
30-2183-1
30-2183-0

Budd Car Diesel Engine Set



GL022802

REV.GL102302



Budd Car Diesel Engine Set

Powered Unit Parts

Name and Number	Part #	\$Price Per Unit	Name and Number	Part #	\$Price Per Unit
1.) Shell (Santa FE)(DC 191)	FC-2200139	*85.00	32.) Screw	IA-0000012	0.15
Shell (B&O)(# 9932)	FC-2200140	*85.00	(M3x14.0mm)(roundhead)(w/ lock washer)		
Shell (Canadian Pacific)	FC-2200141	*85.00	33.) Screw	IA-0000058	0.15
(Dayliner)(# 9020)			(M2x4.0mm)(roundhead)		
Shell (NYC)(# M497)	FC-2200142	*85.00	34.) Switch	BB-0000006	5.00
2.) Window (clear)	FA-2250003	1.00	(large)(2 position)		
(30.0x170.0mm)(sides rear)			35.) Bracket	IH-0000025	1.00
3.) Vent (silver)(plastic)	FC-2200143	1.00	(for mounting Proto-sound® boards)		
4.) Window (clear)	FA-2250004	1.00	36.) Insulator washer (white)	ID-0000033	0.15
(30.0x85.0mm)(sides front)			(6.0x4.0x2.5mm)(plastic)		
5.) Wire shield (gray)	FC-2200144	4.00	37.) Screw	IA-0000003	0.15
(interior detail w/ engineer seat)(ends)			(4/40x6.0mm)(roundhead)		
6.) Horn (nickel)	FC-2200145	6.00	38.) Insulator (clear)	ID-0000024	0.15
7.) Number board (# 191)	FG-2250001	0.50	(13.0x19.0x0.1mm)(single hole)		
Number board (# 9020)	FG-2250002	0.50	39.) Screw	IA-0000063	0.15
Number board (# 9932)	FG-2250003	0.50	(8/32x7.0mm)(roundhead)		
Number board (# M497)	FG-2250004	0.50	40.) Nut (nickel)	IC-0000007	0.50
8.) Window (clear)	FA-2250005	1.00	(6.0x10.0x2.0)(for volume pot)		
(front /rear)			41.) Screw	IA-0000072	0.15
9.) L.E.D.s (red)	CC-0000022	4.00	(M3x8.0mm)(roundhead)(self-drilling threads)		
(6V)(105.0mm long wires w/ yellow male 2 pin plug)			42.) Washer (black)	ID-0000034	0.15
10.) Bulb (clear)	CA-0000021	3.00	(7.0x12.0x0.5mm)		
(18v)(85.0mm long wires w/ blue male 2 pin plug)			43.) Bracket (black)	IH-0000023	3.00
11.) Interior detail (gray)	FC-2200146	*10.00	(volume pot)(plastic)(u-shaped)		
(front)(powered unit)(plastic)			44.) Volume pot	BI-4500001	5.00
12.) Contact spring (copper)	IE-0000015	0.15	45.) Screw	IA-0000033	0.15
13.) Contact spring base	BH-0000001	2.00	(4/40x32.0mm)(flathead)		
(plastic)(for 1 male 2 pin plug)			46.) Pilot (silver)	DG-2200001	15.00
14.) Bracket (black)	IH-0000042	3.00	(front / rear)(1 hole for mounting pilot to truck)		
(battery)(vertical mount)(plastic)			47.) Screw	IA-0000025	0.15
15.) Screw	IA-0000021	0.15	(M3x16.0mm)(washer head)(self-drilling)		
(4/40x4.0mm)(roundhead)			48.) Truck (black)(powered)	DA-2000002	*30.00
16.) Battery (white)	BG-4000001	10.00	(2 axle)(truck side screws mount from bottom)		
(8.4 volts)(re-chargable)(nickel-cadium)			(1 hole for mounting pilot to truck)		
17.) Proto-Sound® chip (4 meg)	AI-0000037	20.00	49.) Truck side (black)	DB-2250006	7.00
18.) Board	AE-4500001	*100.00	49.) Truck side (silver)	DB-2250007	7.00
(Proto-Sound®)(top)			49.) Truck side (gray)	DB-2250008	7.00
19.) Battery leads	BC-0000057	3.00	50.) Speaker	BF-4500008	8.95
(195.0mm long wires w/ black male 2 pin plug)			(STAR)(PR-05004-08)(8 ohms)(0.2watt)		
20.) Clip (black)	IF-0000007	1.00	51.) Screw	IA-0000213	0.15
(Proto-Sound® board)(bottom)(plastic)			(M3x6.0mm)(washer head)		
21.) Clip (black)	IF-0000006	1.00	(plastic cutting threads)(type 25 point)		
(Proto-Sound® board)(top)(plastic)			52.) Fuel tank (silver)	FC-2200148	*10.00
22.) Rubber band	BI-4500004	0.50	52.) Fuel tank (gray)	FC-2200149	*10.00
23.) Interior detail (gray)	FC-2200147	*10.00	52.) Fuel tank (black)	FC-2200150	*10.00
(powered unit)(rear)(plastic)			53.) Insulator (black)	BD-0000015	2.00
(w/ seats & power strips for lighting)			(top)(square)(pick-up)		
24.) Screw	IA-0000021	0.15	54.) Screw (nickel)	IA-0000164	0.15
(4/40x4.0mm)(roundhead)			(M3x8.0mm)(roundhead)		
25.) Contact spring board	BH-0000033	2.00	55.) Screw	IA-0000003	0.15
26.) Motor mount (black)	BI-0000027	15.00	(4/40x6.0mm)(roundhead)		
27.) Motor (RS-365SH)	BE-0000019	25.00	56.) Nut (nickel)	IC-0000004	0.50
(8.0x17.0mm worm gear w/10.5mm long threads)			(2.5x5.0x6.0mm)		
(9.0x30.0mm black tapered flywheel)			57.) Insulator (black)	BD-0000039	2.00
28.) Board	AD-4500001	*60.00	(pick-up)(bottom)(flat w/ rect. box)(18.0x30.0mm)		
(Proto-Sound®)(bottom)			58.) Pick-up	BD-0000025	5.00
29.) Heat sink (Aluminum)	AI-4500002	2.00	(8.0x11.0mm roller)(28.0mm long)		
30.) Screw	IA-0000192	0.15	59.) Screw (nickel)	IA-0000165	0.15
(4/40x25.0mm)(roundhead)			(5/40x6.0mm)(roundhead)		
31.) Screw (yellow Zinc)	IA-0000001	0.15			
(M2.5x6.0mm)(roundhead w/ lock washer)					

*Requires Exchange

All parts are priced as each



Budd Car Diesel Engine Set

Powered Unit Parts

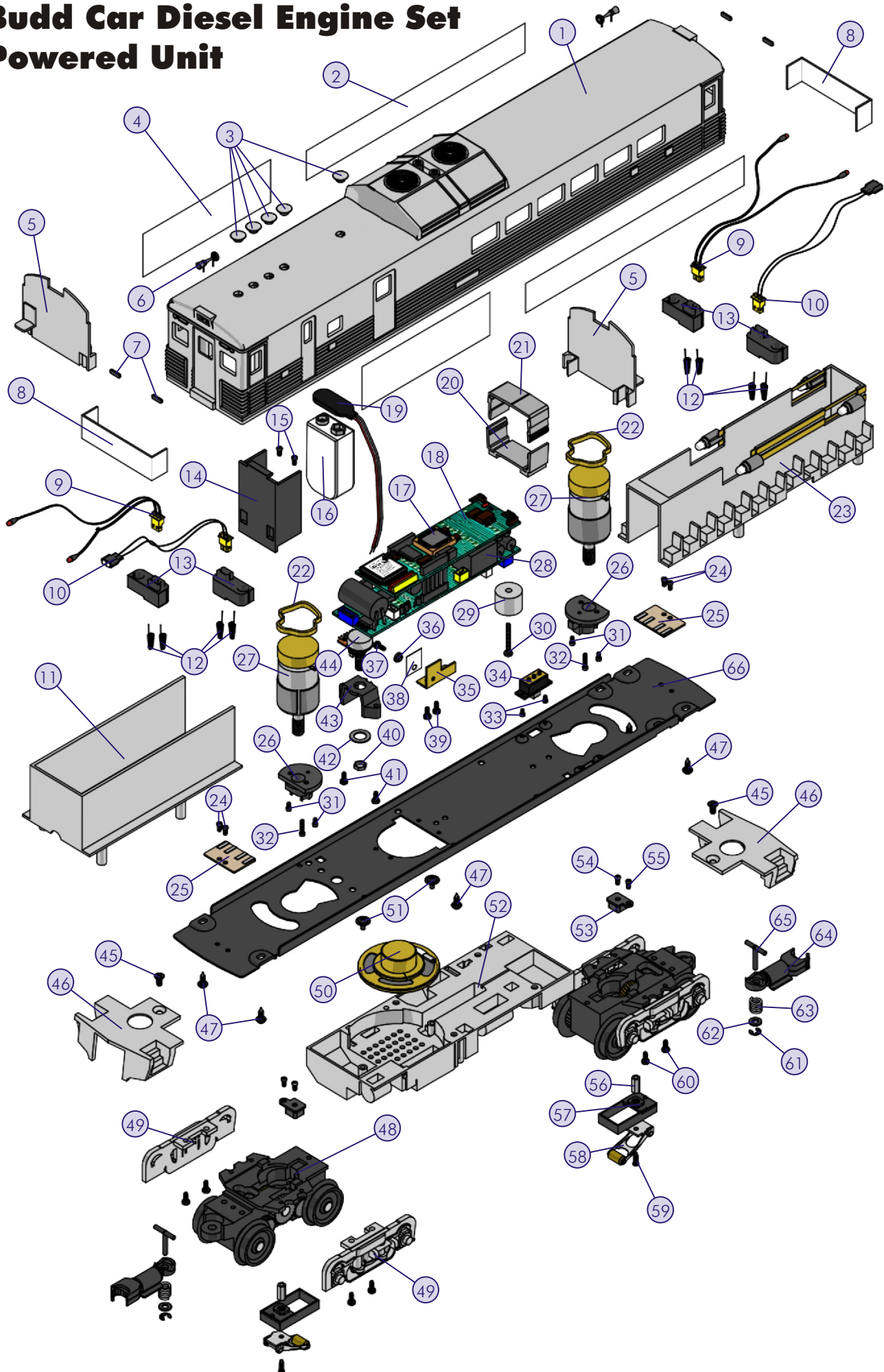
Name and Number	Part #	\$Price Per Unit
60.) Screw (4/40x6.0mm)(roundhead)	IA-0000003	0.15
61.) E-clip (black) (metal)(3.0x8.0x0.5mm)	IF-0000002	0.15
62.) Washer (5.0x10.0x1.0mm)	ID-0000026	0.15
63.) Spring (6.5x14.0mm)(w/ 0.5mm thick wire)	IE-0000022	0.50
64.) Proto-Coupler® (Proto-Sound® PS1)(44.5mm long)	DD-0000004	10.00
65.) T-bar (4.0x20.0mm)(plastic)	IG-0000001	0.50
66.) Chassis (black)	DH-2200037	*15.00
NS.) Bulb (clear) (18v)(w/ white hooded base)(2 bare wires off bulb) (3.0x6.5mm grain of wheat bulb) (for interior lighting)	CG-0000047	1.50
NS.) Socket (white) (plastic)(6.9x10.0mm)(for plug in bulbs) (for interior lighting)	CH-0000042	1.00

Horn Only Parts

18.) Board (horn)	AF-4500004	29.95
28.) Board (DCRU)	AC-0000004	39.95

*Requires Exchange
All parts are priced as each

Budd Car Diesel Engine Set Powered Unit



Budd Car Diesel Engine Set

Non-powered Unit Parts

Name and Number	Part #	\$Price Per Unit	Name and Number	Part #	\$Price Per Unit
1.) Shell (Santa Fe)(DC 192)	FC-2200151	*85.00	32.) Pick-up	BD-0000025	5.00
Shell (B&O)(# 9920)	FC-2200152	*85.00	(8.0x11.0mm roller)(28.0mm long)		
Shell (Canadian Pacific)	FC-2200153	*85.00	33.) Screw	IA-0000165	0.15
(Dayliner)(# 9064)			(5/40x6.0mm)(roundhead)		
Shell (NYC)(# M465)	FC-2200154	*85.00	34.) Insulator (black)	BD-0000063	2.00
2.) Window (clear)	FA-2250003	1.00	(pick-up)(bottom)(square)(boxed shaped)(plastic)		
(30.0x170.0mm)(sides rear)			35.) Nut (2.5x5.0x6.0mm)	IC-0000004	0.50
3.) Window	FA-2250006	1.00	36.) Screw	IA-0000003	0.15
(30.0x145.0mm)(sides front)			(4/40x6.0mm)(roundhead)		
4.) Horn (nickel)	FC-2200145	6.00	37.) Truck side (black)	DB-2250006	7.00
5.) Number board (# 192)	FG-2250005	0.50	Truck side (silver)	DB-2250007	7.00
Number board (# 9920)	FG-2250006	0.50	Truck side (gray)	DB-2250008	7.00
Number board (# 9064)	FG-2250007	0.50	38.) Truck (black)	DA-2250005	*20.00
Number board (# M465)	FG-2250008	0.50	(non-powered)(2 axle)(1 hole for mounting pilot)		
6.) Wire shield (gray)	FC-2200144	4.00	39.) Insulator (black)	BD-0000015	2.00
(interior detail w/ engineer seat)(ends)			(top)(square)(pick-up)		
7.) Window (clear)	FA-2250005	1.00	40.) Screw	IA-0000003	0.15
(front /rear)			(4/40x6.0mm)(roundhead)		
8.) L.E.D.s (red)	CC-0000022	4.00	41.) Screw	IA-0000164	0.15
(6V)(105.0mm long wires w/ yellow male 2 pin plug)			(M3x8.0mm)(roundhead)		
9.) Wire Harness	BC-0000041	3.00	NS.) Bulb (clear)	CG-0000047	1.50
10.) Contact spring (copper)	IE-0000015	0.15	(18v)(w/ white hooded base)(2 bare wires off bulb)		
11.) Contact spring board	BH-0000033	2.00	(3.0x6.5mm grain of wheat bulb)		
12.) Screw	IA-0000021	0.15	(for interior lighting)		
(4/40x4.0mm)(roundhead)			NS.) Socket (white)	CH-0000042	1.00
13.) CV board	AG-0000026	20.00	(plastic)(6.9x10.0mm)(for plug in bulbs)		
(w/ blue & yellow female 2 pin plugs)			(for interior lighting)		
(red & black wires off of board)					
14.) Interior detail (gray)	FC-2200155	*10.00			
(w/ seat detail)					
15.) Bulb guide	CH-0000027	10.00			
(30.0x280.0mm)					
(85.0mm long wires w/ black male 2 pin plug)					
16.) Screw	IA-0000278	0.15			
(6/32x3.0mm)(flathead)					
17.) Bulb	CA-0000022	3.00			
18.) Contact spring base (black)	FC-2200150	*10.00			
19.) Chassis	DH-2200038	*15.00			
20.) Screw	IA-0000025	0.15			
(M3x16.0mm)(washer head)(self-drilling)					
21.) Screw	IA-0000033	0.15			
(4/40x32.0mm)(flathead)					
22.) Pilot (silver)	DG-2200001	15.00			
(front / rear)(1 hole for mounting pilot to truck)					
23.) Spring (8.0x12.0mm)	IE-0000011	0.50			
24.) Bolt	IA-0000088	0.15			
(8/32x15.0mm)(1.8x10.0mm slotted head)					
(6.0x8.0mm oversized shank)					
25.) Fuel tank (silver)	FC-2200148	*10.00			
25.) Fuel tank (gray)	FC-2200149	*10.00			
25.) Fuel tank (black)	FC-2200150	*10.00			
26.) T-bar (black)	IG-0000001	0.50			
(4.0x20.0mm)(plastic)					
27.) Coupler (black)	DD-0000003	3.00			
(mechanical)(44.0mm long)					
28.) Armature (black)	DD-0000022	1.00			
29.) Spring (nickel)	IE-0000007	0.50			
(6.5x11.0mm)(w/ 0.4mm thick wire)					
30.) Washer (black)	ID-0000026	0.15			
(5.0x10.0x1.0mm)					
31.) E-clip (black)	IF-0000002	0.15			

*Requires Exchange
All parts are priced as each

Budd Car Diesel Engine Set Non-powered Unit

