

RAIL KING[®]
By M.T.H. Electric Trains

30-4094-1
33-1011-1

4-6-0

Steam Engine



GL082001

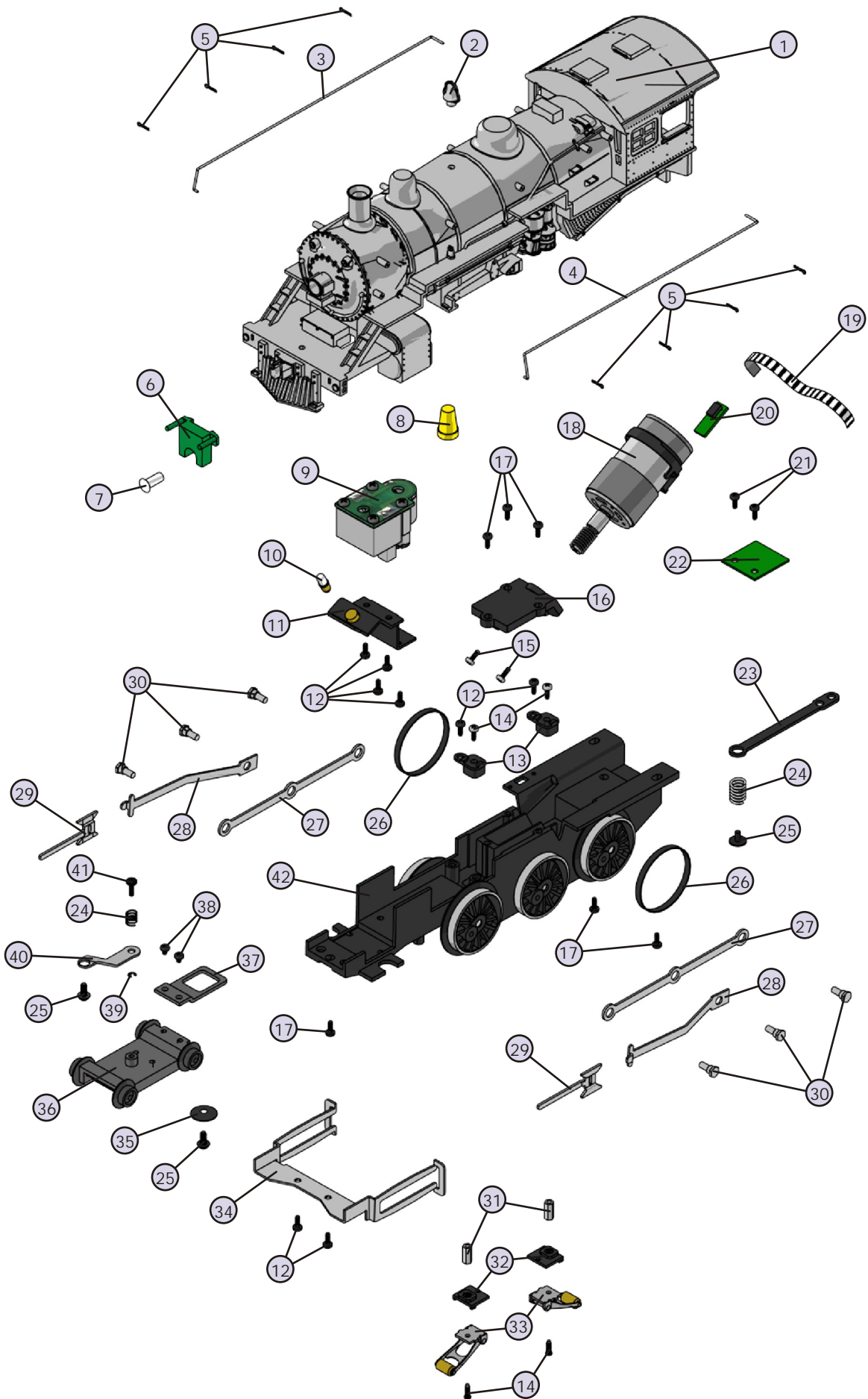


4-6-0 Steam Engine - Boiler Parts

	Name and Number	Part #	\$Price Per Unit
1.)	Shell (black)(boiler) (New York Central)(# 1242)	FB-1200197	*100.00
2.)	Bell (nickel)	FB-1200101	6.00
3.)	Handrail (nickel)(boiler) (right)(150.0mm long)(bends down 13.4mm)	FB-1210042	2.00
4.)	Handrail (nickel)(boiler) (left)(150.0mm long)(bends down 13.4mm)	FB-1220049	2.00
5.)	Stanchion (black)	FB-1200024	0.25
6.)	Lens (green)(marker light)	FA-1230021	2.00
7.)	Lens (clear)(headlight)	FA-1230022	2.00
8.)	Wire nut (yellow)	BI-4500003	0.25
9.)	Smoke unit (Proto-Sound 2.0®) (6v)(small globe)(screw base)	AA-0000029 CA-0000038	*50.00 1.00
11.)	Bracket (black) (headlight / smoke unit)(metal)(angled)	IH-0000174	3.00
12.)	Screw (4/40x6.0mm)(roundhead)	IA-0000003	0.15
13.)	Insulator (black) (top)(square)(pick-up)	BD-0000026	2.00
14.)	Screw (nickel) (M3x6.0mm)(roundhead)	IA-0000015	0.15
15.)	Screw (yellow zinc) (M2.5x6.0mm)(roundhead w/ lock washer)	IA-0000089	0.15
16.)	Motor mount (black)	BI-0000034	15.00
17.)	Screw (6/32x8.0mm)(roundhead)	IA-0000050	0.15
18.)	Motor (RS-365SH) (8.0x29.0mm worm gear)(14.5mm long threads) (9.0x30.0mm flywheel)(w/ tach board mounting strap)	BE-0000079	25.00
19.)	Tach tape (fits 30.0mm flywheel)(1.96mm wide stripes) (black & white striped tape)	BE-0000069	1.00
20.)	Tach board (has small resister on backside of tach board)	AG-0000048	6.00
21.)	Screw (6/32x6.0mm)(roundhead)	IA-0000027	0.15
22.)	PC board (green) (10 pin female plug)(20.5x24.2mm) (w/ 2-1N4004 diodes)	AG-0000044	8.00
23.)	Draw bar (black) (67.5mm long)	FB-1200079	3.00
24.)	Spring (nickel) (6.5x10.0mm)(w/ 0.6mm thick wire)	IE-0000061	0.50
25.)	Screw (6/32x6.0mm)(washer head)	IA-0000214	0.15
26.)	Traction tire	DE-0000023	0.75
27.)	Side rod (nickel) (94.0mm long)(3 bolt holes)	EC-1250026	3.00
28.)	Drive rod (nickel) (74.5mm long)(7.0mm step)	EC-1250027	4.00
29.)	Crosshead (nickel) (38.8mm long)	EC-1250016	1.00
30.)	Bolt (nickel)(M3x9.4mm) (4.0x2.5mm shoulder)(5.0mm hex head)	IA-0000253	1.00
31.)	Nut (nickel) (2.5x5.0x10.0mm)	IC-0000005	0.50
32.)	Insulator (black) (pick-up)(bottom)(plastic)	BD-0000001	2.00
33.)	Pick-up (8.0x11.0mm roller)(28.0mm long)	BD-0000048	5.00
34.)	Crosshead guide assembly (nickel)(2 crosshead guides connected together)	EA-1200016	6.00
35.)	Spacer (black)(cupped) (3.5x15.0x2.5mm)(metal)	ID-0000014	0.50
36.)	Truck (black) (lead)(2 axle)(boiler)	DA-1230015	20.00
37.)	Bracket (black)(lead truck)	IH-0000076	2.00
38.)	Screw (4/40x4.0mm)(roundhead)	IA-0000021	0.15
39.)	E-clip (2.5x6.0x0.5mm)	IF-0000004	0.15
40.)	Bracket (black)(lead truck) (38.9mm long)(4.5mm step)	IH-0000175	1.00
41.)	Pin (black) (3.0x14.8mm)(6.3mm rounded head) (1 e-clip groove 0.5mm out from end)	IG-0000037	0.50
42.)	Drive block (black)(3 axle)	DF-1200030	*75.00

*Requires Exchange
All parts are priced as each

4-6-0 Steam Locomotive Engine Parts



4-6-0 Steam Engine - Tender Parts

Name and Number	Part #	\$Price Per Unit
1.) Shell (black)(plastic) (tender)(New York Central)	GA-1200076	*40.00
2.) Screw (M3x6.0mm)(roundhead)	IA-0000016	0.15
3.) Speaker cone (black) (44.0x48.3x23.0mm)(plastic)(2 screw hole tabs)	BF-0000016	5.00
4.) Speaker (Cuistack) (GF0501)(16 ohms)(0.25 watt)	BF-0000007	8.95
5.) Gasket (black) (speaker ring)(43.8x49.8x3.0mm)(foam)	IB-0000009	0.50
6.) Wire harness (black) (10 pin male plug)(w/ 4 pin plug)(w/ 5 pin plug) (w/ 7 pin plug)(w/ extra purple wire)	BC-1200032	12.00
7.) Spacer (black) (3.0x6.0x4.3mm)(plastic)	ID-0000071	0.15
8.) Volume pot (small)(blue)	BI-0000040	5.00
9.) Bracket (black) (battery)(horizontal/vertical mount)(plastic)	IH-0000048	3.00
10.) Screw (M3x8.0mm)(roundhead)	IA-0000035	0.15
11.) Screw (M3x4.0mm)(roundhead)	IA-0000010	0.15
12.) Battery leads (195.0mm long wires)(2 pin small black male plug)	BC-0000075	3.00
13.) Battery	BG-4000001	9.95
14.) Wire nut (yellow)	BI-4500003	0.25
15.) Screw (4/40x6.0mm)(roundhead)	IA-0000003	0.15
16.) Insulator (white) (washer)(3.0x6.0x3.0mm)(plastic)	ID-0000025	0.15
17.) Voltage regulator (LM2937ET)	AG-0000032	3.00
18.) Insulator (clear) (13.0x19.0x0.1mm)(single hole)	ID-0000024	0.15
19.) Boards (Proto-Sound 2.0®)	AE-0000001	*200.00
20.) Switch (black)(small)	BB-0000009	5.00
21.) Screw (M2x4.0mm)(roundhead)	IA-0000058	0.15
22.) Bracket (Aluminum) (for Proto-Sound 2.0® boards) (15.0x38.0mm)(1.4mm thick)	IH-0000176	3.00
23.) Screw (4/40x16.0mm)(roundhead)	IA-0000047	0.15
24.) Chassis (black)(tender) (for Proto-Sound 2.0®)	GB-1200041	*15.00
25.) T-bar (black)	IG-0000001	0.50
26.) Coupler (Proto Sound 2.0®) (51.0mm long)	DD-0000032	10.00
27.) Spring (6.5x14.0mm)(0.5 thick wire)	IE-0000022	0.50
28.) Washer (black) (4.5x10.0x5.0mm)	ID-0000009	0.15
29.) E-clip (black) (3.0x8.0x0.5mm)	IF-0000001	0.15
30.) Screw (4/40x8.0mm)(roundhead)	IA-0000011	0.15
31.) Truck (black) (2 axle)(leading/trailing)(tender)	DA-1250007	25.00
32.) Screw (6/32x6.0mm)(washer head)	IA-0000214	0.15
33.) Screw (M3x16.0mm)(washer head)(self-drilling)	IA-0000025	0.15

*Requires Exchange
All parts are priced as each

4-6-0 Steam Engine Tender Parts

