

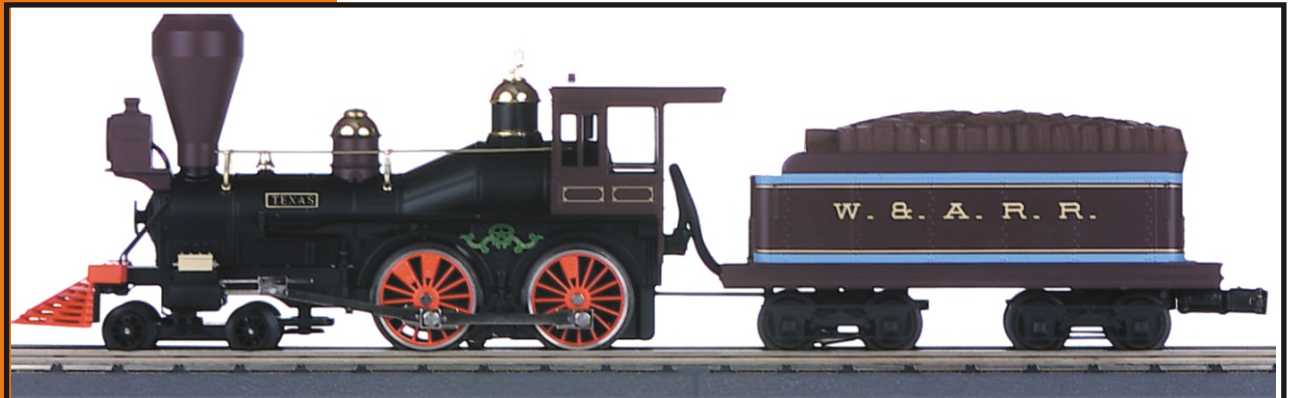
RAIL KING[®]
By M.T.H. Electric Trains

30-1135-1

30-1135-0

Texas

4-4-0 Steam Engine



REV033103



Texas 4-4-0 Steam Engine

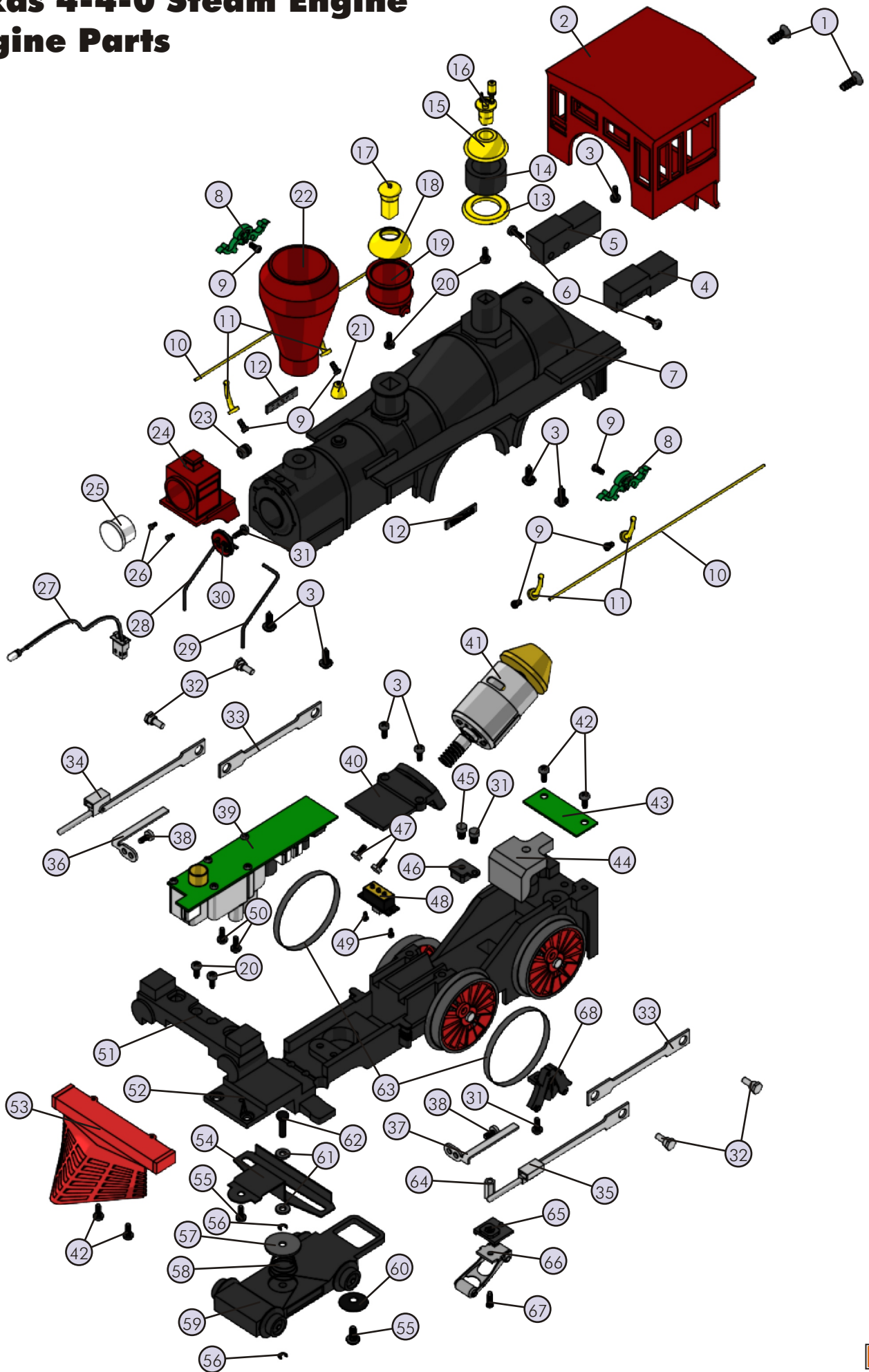
Engine Parts

Name and Number	Part #	\$Price Per Unit	Name and Number	Part #	\$Price Per Unit
1.) Screw (Texas brown) (6/32x8.0mm)(flathead)	IA-0000271	0.15	44.) Weight (black) (fits under motor)	II-0000009	5.00
2.) Cab (Texas)(Texas brown)	FB-1200108	*25.00	45.) Screw (nickel) (M3x6.0mm)(roundhead)	IA-0000015	0.15
3.) Screw (6/32x10.0mm)(roundhead)	IA-0000040	0.15	46.) Insulator (black) (top)(square)(pick-up)	BD-0000026	2.00
4.) Weight (black)(left)	II-0000007	6.00	47.) Screw (yellow Zink) (M2.5x6.0mm)(roundhead w/ lock washer)	IA-0000089	0.15
5.) Weight (black)(right)	II-0000008	6.00	48.) Switch (small)	BB-0000009	5.00
6.) Screw (M3x10.0mm)(roundhead)	IA-0000110	0.15	49.) Screw (M2x4.0mm)(roundhead)	IA-0000058	0.15
7.) Boiler (black)(Texas)	FB-1200109	*65.00	50.) Screw (4/40x8.0mm)(roundhead)	IA-0000011	0.15
8.) Builder's plate (green)	FB-1200110	5.00	51.) Steam chest (black & gold)	EF-1230008	15.00
9.) Screw (M2x3.0mm)(washer head)	IA-0000118	0.15	52.) Drive block (2 axle) (black w/ red drive wheels)	DF-1200021	*60.00
10.) Handrail (polished brass)	FB-1200111	2.00	53.) Pilot (red)(Texas)	DG-1230011	20.00
11.) Stanchion (polished brass)	FB-1200112	1.00	54.) Bracket (black)(lead truck)	IH-1230002	3.00
12.) Name plate (Texas)	FB-1200113	4.00	55.) Screw (4/40x6.0mm)(washer head)	IA-0000028	0.15
13.) Ring (polished brass)	FB-1200114	3.00	56.) E-clip (black)(2.5x6.0x0.5mm)	IF-0000004	0.15
14.) Spacer (black)(Steam dome)	FB-1200115	3.00	57.) Spacer (black)(3.0x15.0x2.0) (w/ cutouts on each side for spring and e-clip)	ID-0000066	0.50
15.) Steam dome (polished brass)	FB-1200116	3.00	58.) Spring (nickel) (12.0x9.0x6.5mm)(w/ 0.5mm thick wire)	IE-0000037	0.50
16.) Whistle (polished brass)	FB-1200117	4.00	59.) Truck (black)(lead)(2 axle)	DA-1230018	20.00
17.) Sand dome cap (polished brass)	FB-1200118	3.00	60.) Spacer (black) (3.5x15.0x2.5mm)(metal)(cupped)	ID-0000014	0.50
18.) Sand dome (polished brass)	FB-1200119	3.00	61.) Washer (black) (3.0x7.0x0.4mm)	ID-0000028	0.15
19.) Sand dome housing (Texas brown)	FB-1200120	5.00	62.) Pin (black) (3.0x11.6mm)(1.5x6.0mm rounded head) (e-clip grooves 0.5mm & 8.0mm out from end)	IG-0000015	0.50
20.) Screw (6/32x8.0mm)(roundhead)	IA-0000050	0.15	63.) Traction tire (black) (27.0x3.5mm)(rubber)	DE-0000027	0.75
21.) Bell (polished brass)	FB-1200121	4.00	64.) Nut (nickel) (2.5x5.0x10.0mm)(mounts between pick-ups)	IC-0000001	0.50
22.) Smokestack (Texas brown)	FB-1200122	10.00	65.) Insulator (black) (pick-up)(bottom)(square)(plastic)	BD-0000001	2.00
23.) Grommet (black) (4.5x5.0mm)(rubber)	IH-0000010	0.50	66.) Pick-up (8.0x11.0mm roller)(28.0mm long)	BD-0000025	5.00
24.) Headlight housing (Texas brown)(Texas)	FB-1200123	12.00	67.) Screw (nickel) (M3x8.0mm)(roundhead)	IA-0000164	0.15
25.) Lens (clear)(headlight)	FA-1230005	2.00	68.) Brake assembly (black)	FB-1250001	8.00
26.) Screw (M2.5x6.0mm)(roundhead)	IA-0000185	0.15			
27.) Bulb (clear) (18v)(105.0mm long wires w/ male 2 pin plug) (grain of wheat)(headlight)	CA-0000016	3.00			
28.) Handrail (black)(right)	FB-1210025	2.00			
29.) Handrail (black)(left)	FB-1220025	2.00			
30.) Number board (red)(#49)	FB-1200124	4.00			
31.) Screw (4/40x6.0mm)(roundhead)	IA-0000003	0.15			
32.) Bolt (nickel)(M3x10.0mm) (w/ 3.5x4.0mm oversized shank)(hex head)	IA-0000265	1.00			
33.) Side rod (nickel)	EC-1250001	2.00			
34.) Drive rod (nickel)(right)	EC-1210004	5.00			
35.) Drive rod (nickel)(left)	EC-1220004	5.00			
36.) Drive rod guide (nickel)(right)	EA-1210008	2.00			
37.) Drive rod guide (nickel)(left)	EA-1220008	2.00			
38.) Screw (nickel) (4/40x6.0mm)(roundhead)	IA-0000101	0.15			
39.) Smoke unit (w/ 5.3mm high brass cup)	AA-1200014	50.00			
40.) Motor mount (black)	BI-0000038	10.00			
41.) Motor (RS-365SH) (8.0x21.0mm worm gear)(w/ 13.0mm long threads) (12.0x28.0mm tapered flywheel)	BE-0000048	25.00			
42.) Screw (6/32x6.0mm)(roundhead)	IA-0000027	0.15			
43.) PC board (green) (w/ black female 4 pin plug)	BB-1040003	8.00			

*Requires Exchange
All parts are priced as each

Texas 4-4-0 Steam Engine

Engine Parts



Texas 4-4-0 Steam Engine

Tender Parts

Name and Number	Part #	\$Price Per Unit	Name and Number	Part #	\$Price Per Unit
1.) Shell (tender)(Texas) (Texas brown, light blue, gold)	GA-1200048	*75.00	34.) Screw (nickel) (M3x8.0mm)(roundhead)	IA-0000164	0.15
2.) Screw (6/32x6.0mm)(roundhead)	IA-0000027	0.15	35.) Insulator (black) (pick-up)(top)(square)(has mounting tab on top left)	BD-0000047	2.00
3.) Chip (Proto-Sound®)(4 meg)	AI-0000037	20.00	36.) Screw (M3x6.0mm)(roundhead)	IA-0000016	0.15
4.) Board (Proto-Sound®)(top)	AE-4500001	*100.00	37.) E-clip (black) (metal)(3.0x8.0x0.5mm)	IF-0000002	0.15
5.) Board (Proto-Sound®)(bottom)	AD-4500001	*60.00	38.) Washer (5.0x10.0x1.0mm)	ID-0000026	0.15
6.) Heat sink (Aluminum) (3.0x14.0x10.0mm)	AI-4500005	2.00	39.) Spring (nickel) (6.5x14.0mm)(w/ 0.5mm thick wire)	IE-0000022	0.50
7.) Screw (4/40x25.0mm)(roundhead)	IA-0000192	0.15	40.) Proto-Coupler® (Proto-Sound® PS1)(44.5mm long)	DD-0000004	10.00
8.) Screw (M2.5x3.0mm)(roundhead)	IA-0000022	0.15	41.) T-bar (black) (4.0x20.0mm)(plastic)	IG-0000001	0.15
9.) Bracket (black) (speaker)(metal)(9.0x9.5mm)(3.0mm step) (rounded corners on mounting end)	IH-0000002	1.00			
10.) Speaker (UNISON)(U4508BSR)(8 ohms)(0.9watt)	BF-4500013	8.95	*Requires Exchange All parts are priced as each		
11.) Screw (M3x8.0mm)(roundhead)(self-drilling threads)	IA-0000072	0.15			
12.) Nut (nickel) (6.0x10.0x2.0)(for volume pot)	IC-0000007	0.50			
13.) Washer (7.0x12.0x0.5mm)	ID-0000034	0.15			
14.) Bracket (black) (volume pot)(plastic)(U-shaped)	IH-0000023	2.00			
15.) Volume pot (w/ 115.0mm long wires)	BI-0000039	5.00			
16.) Wire nut (yellow)	BI-4500003	0.25			
17.) Screw (4/40x6.0mm)(roundhead)	IA-0000003	0.15			
18.) Insulator (white) (washer)(3.0x6.0x3.0mm)(plastic)	ID-0000025	0.15			
19.) Bracket (brass) (for mounting Proto-Sound® boards)	IH-4500005	2.00			
20.) Insulator (clear) (13.0x19.0x0.1mm)(single hole)	ID-0000024	0.15			
21.) Battery leads (145.0mm long wires w/ white male 2 pin plug)	BC-4000009	3.00			
22.) Battery (8.4 volts)(re-chargable)(nickel-cadium)	BG-4000001	10.00			
23.) Screw (4/40x4.0mm)(roundhead)	IA-0000021	0.15			
24.) Bracket (brass) (battery)(metal)(U-shaped)	IH-0000092	2.00			
25.) Chassis (black)	GB-1200029	*15.00			
26.) Wire harness (tender) (250.0mm long wires w/black angled male 4 pin plug) (& yellow, red, black & white male 2 pin plugs) (extra wire on red and black plugs)	BC-0000028	8.00			
27.) Axle bushing (black) (plastic)(tender truck)	DC-0000002	1.00			
28.) Truck (black)(2 axle)(tender)	DA-1200009	25.00			
29.) Screw (6/32x6.0mm)(washer head)	IA-0000214	0.15			
30.) Ground strap (copper) (41.0mm long)	II-4500001	0.15			
31.) Insulator (black) (pick-up)(bottom)(square)(plastic)	BD-0000001	2.00			
32.) Nut (nickel) (2.5x5.0x10.0mm)	IC-0000001	0.50			
33.) Pick-up (8.0x11.0mm roller)(28.0mm long)	BD-0000048	5.00			

Texas 4-4-0 Steam Engine Tender Parts

