

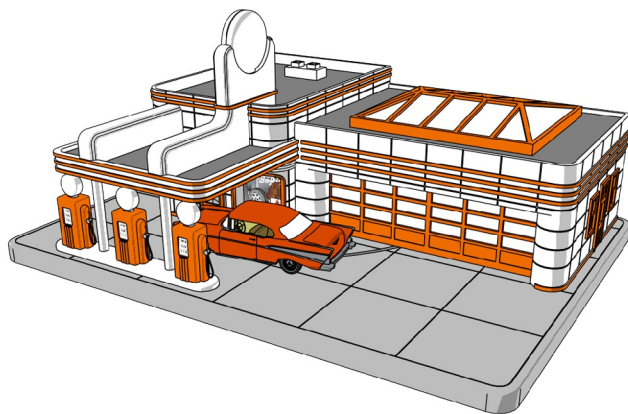


# M.T.H.

ELECTRIC TRAINS.

7020 Columbia Gateway Drive  
Columbia, MD 21046-1532

[www.mth-railking.com](http://www.mth-railking.com)



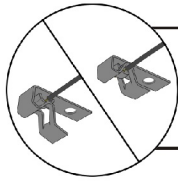
The RailKing® Operating Gas Station adds a touch of period authenticity to any O Gauge layout. Constructed from sturdy ABS plastic and painted in a familiar and authentic scheme, the gas station is sure to please anyone who likes to see action on a layout.

The gas station is pre-assembled, so setup is quick and easy. Just follow the directions and diagrams inside.

# Operating Gas Station

## WIRING INSTRUCTIONS

The RailKing® Gas Station is made up of three components: the gas station building and base, the car, and the activation button. Before you place the gas station on the layout, you must wire it to the activation button and transformer. In order to connect power to each component, the six (6) enclosed wires must be connected to the wiring posts located on the underside of the gas station and the activation button. Wires from ports A-C control the car operation. Wires from ports D-E control the lights. Follow the diagram shown to make the correct connections.



Strip Z-wire cable harness insulation to reveal 1/4" of bare wire.

- A Connect Red wire to transformer AC and connect Black wire to activation button
- B Connect Black wire to transformer ground
- C Connect Black wire to activation button
- D Connect Red wire to transformer AC
- E Connect Black wire to transformer ground

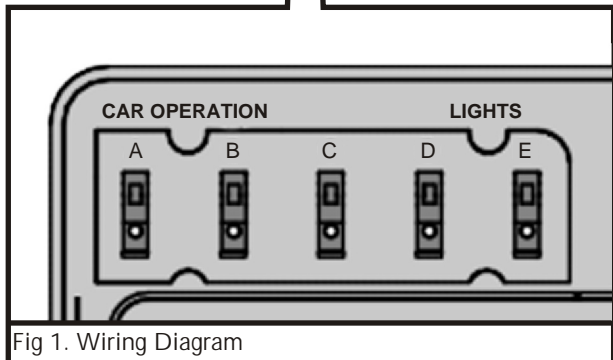
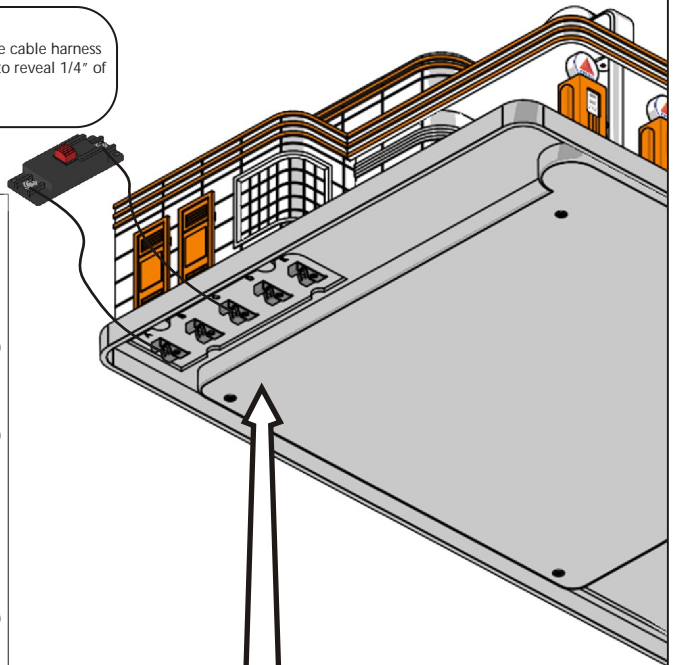


Fig 1. Wiring Diagram

Final Touches: : To protect part of the rooftop sign from breaking during transit, the sign is packaged separately, in a small plastic bag. To complete set up, pop the circular part of the sign into the hole designed for it on the sign base.

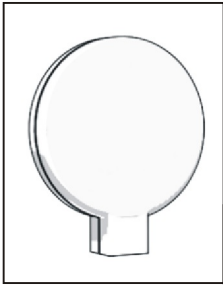


Fig 2 . Circular part of the rooftop sign that is packaged separately

Operating Instructions: Once the gas station is wired to receive a 14-20 volt minimum power supply from the transformer and the transformer is turned on, simply press the activation button to start the gas station sequence.

In order to get the car into the gas station service bay, you must press the activation button to begin the cycle. Once the small tab that will carry the car along its track has exited the gas station and come to a stop, place the car onto the tab. When you play the return sequence, the car will be taken into the garage.

In the beginning sequence, the garage door will open, and you will hear the sound of the car engine starting. The car will roll from the garage to the pumps, which will trigger the service bell to ring. Once the car has come to a stop at the gas pumps, the sound of the pump filling the car will play for approximately five seconds. After the pump sounds stop, the car will remain at the pumps until the operator pushes the activation button.

When you push the activation button a second time, the car engine will start up and the car will back into the service bay. Once the car has come to a stop, the engine sounds will shut down and the bay door will close.

You can stop the motion at any time by turning off the power or by pressing the transformer's direction button. Once the power is restored, the car will return to its starting position within the bay without sound effects.

**Replacing the Light Bulbs:** There are several easy-to-change light bulbs located in the gas station. Follow the instructions below to change them.

**Sign Light:** Pop the circular part of the sign off to access the bulb. To replace the bulb, simply pull it out and push a new one in, like Christmas tree lights (See Fig. 4).

**Pump Lights:** Pop the gas pump off the base to access the bulb. To replace the bulb, pull it out and push a new one in, like the sign light (See Fig. 4).

For the building and garage bulbs, you must first access the interior of the housing as follows:

- Remove the car from the gas station.
- Turn the building and base upside down, propping it carefully. Remove the four (4) screws from the base cover then lift the base cover off (See Fig. 3).
- Remove the ten (10) screws located on the bottom of the base. There is no need to remove the gear. Note that the two screws that hold the pumps in place are longer than the others and be sure to replace them in the correct location when reassembling (See Fig. 3).
- Carefully turn the gas station back over and tilt the housing away from the base. The wiring will remain connected.
- Replace the light bulbs as described below:

**Building Lights:** Twist the bulbs counterclockwise then pull to remove them. Push in and twist clockwise to replace the bulb (See Fig. 4).

**Garage Light:** Pull the bulb out and push the new one in to replace it (See Fig. 4).

Reassemble the gas station in the reverse order given above.

You can obtain replacement bulbs directly from the M.T.H. Parts Department (phone: 410-381-2580; e-mail: [parts@meth-railking.com](mailto:parts@meth-railking.com); mail: 7020 Columbia Gateway Drive, Columbia MD 21046-1532).

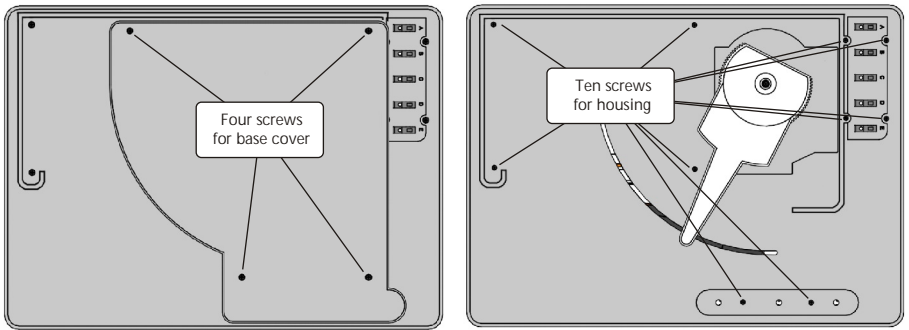


Fig 3. Removing the two sets of four and ten screws to reveal the inside of the building

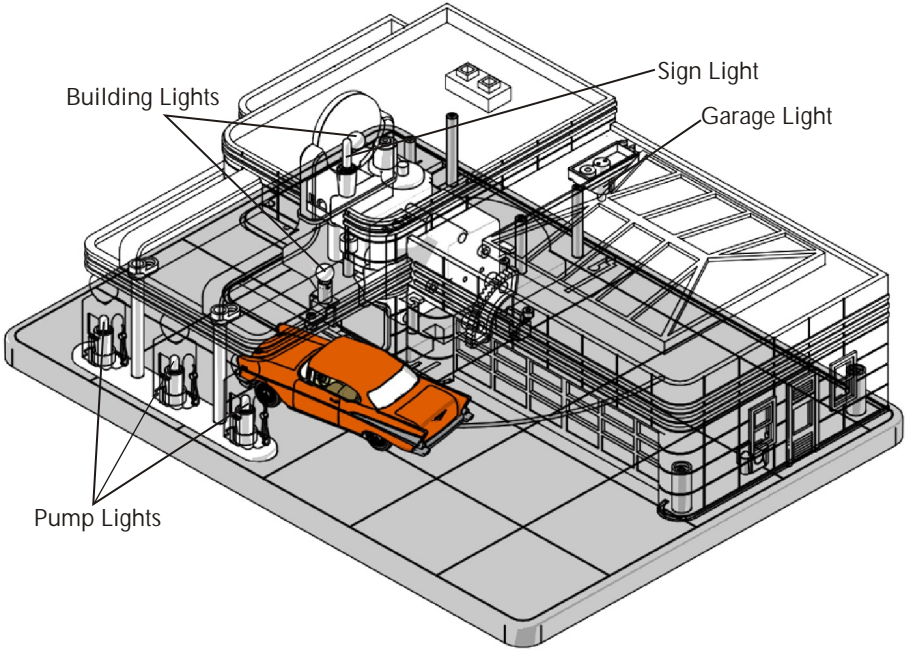


Fig 4. Locations of the interior bulbs of the Gas Station

## **CAUTION: ELECTRICALLY OPERATED PRODUCT:**

Not recommended for children under 8 years of age without adult supervision. As with all electric products, precautions should be observed during handling and use to reduce the risk of electric shock.

**WARNING:** When using electrical products, basic safety precautions should be followed including the following:

- Read this manual thoroughly before using this device.
- M.T.H. recommends that all users and persons supervising use examine the unit periodically for conditions that may result in the risk of fire, electric shock, or injury to persons, such as damage to the primary cord, plug blades, housing, output jacks or other parts. In the event such conditions exist, the unit should not be used until properly repaired.
- This unit is intended for indoor use. Do not use if water is present. Serious injury or fatality may result.
- Do not operate with damaged wires or clips.
- Do not use this unit for other than its intended purpose. This unit was designed to operate with any AC or DC output toy train transformer. See the transformer's operating instructions for more operating and safety information.



## How to Get Service Under the Terms of the Limited One-Year Warranty

For warranty repair, do not return your product to the place of purchase. Instead, follow the instructions below to obtain warranty service, as our dealer network is not prepared to service the product under the terms of this warranty.

1. First, write, call or FAX M.T.H. Electric Trains, 7020 Columbia Gateway Drive, Columbia, MD 21046, (Tel: 410-381-2580; FAX : 410-423-0009; e-mail: [service@mth-railking.com](mailto:service@mth-railking.com)), stating when it was purchased and what seems to be the problem. You will be given a return authorization number to assure that your merchandise will be properly handled upon its receipt.

2. CAUTION: Make sure the product is packed in its original factory packaging including its foam and plastic wrapping material so as to prevent damage to the merchandise. The shipment must be prepaid and we recommend that it be insured. *A cover letter including your name, address, daytime phone number, e-mail address (if available), Return Authorization number, a copy of your sales receipt and a full description of the problem must be included to facilitate the repairs. Please include the description regardless of whether you discussed the problem with one of our service technicians when contacting M.T.H. for your Return Authorization number.*

3. Please make sure you have followed the instructions carefully before returning any merchandise for service.

### Limited One-Year Warranty

**All M.T.H. products purchased from an Authorized M.T.H. Train Merchant are covered by this warranty.**

See our website at [www.mth-railking.com](http://www.mth-railking.com) or call 1-888-640-3700 to identify an Authorized M.T.H. Train Merchant near you.

M.T.H. products are warranted for one year from the date of purchase against defects in material or workmanship, excluding light bulbs and traction tires. We will repair or replace (at our option) the defective part without charge for the parts or labor, if the item is returned to M.T.H. Electric Trains within one year of the original date of purchase. This warranty does not cover damages caused by improper care, handling, or use. Transportation costs incurred by the customer are not covered under this warranty.

Items sent for repair must be accompanied by a return authorization number, a description of the problem, and the **original sales receipt from an Authorized M.T.H. Train Merchant**, which gives the date of purchase. Call 410-381-2580, fax 410-423-0009, or e-mail the Service Department at [service@mth-railking.com](mailto:service@mth-railking.com) to obtain a return authorization number.

This warranty gives you specific legal rights, and you may have other rights that vary from state to state.

Service Department  
M.T.H. Electric Trains  
7020 Columbia Gateway Drive  
Columbia MD 21046-1532